

## Tewantin Shield Pre-selection to open

Not sure where to submit??

log into My Camera Club – go to “Members” – “Enter a Competition” – look under “Non pointscore competitions or collections” and choose the Category for “2018 Tewantin Shield”

Shortly you will be able to upload entries to MPC website for our pre-selection process for the Tewantin Shield Competition.

Maximum jpeg image dimensions are 1620 horizontal × 1080 vertical pixels @ highest quality (12).

This is one of our annual competitions.

There are four (4) categories:

People (PE), Pictorial (PI), Nature (NA) and looking down (SS).

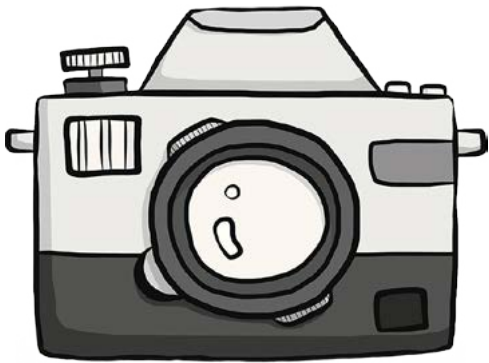
Images previously entered in the Tewantin shield will not be accepted. We have been advised there will be a 1st place only in each section. The champion image will receive an award.

Our Club may enter five (5) images per category, with the maximum of two entries per person per section allowed.

**I would encourage all members to enter as many categories as possible**, so that we have a good range from which to make our final selection. We are allowing each member to enter up to two entries in each of the competitions from where the final images will be chosen.

The pre-selection for this competition will be open shortly on our website, with closing date being 5th October 2018 to allow time for selections before the clubs final submission.

### Call for entries



### Categories

**People (PE):** One or more people/persons. may be portrait, candid or other but the center of interest must be the person/people. Must be a live human being (manikins, statues, ornaments will not be accepted).

**Pictorial (PI):** Open subject - image must not fall into the other categories available.

**Nature (NA):** The FIAP Nature Definition as used by PSQ and APS.  
<https://www.a-p-s.org.au/index.php/nature-definition>.

**Looking Down (SS):** No Aerial or Drone shots are allowed. Photographer must not be in or supported by a parachute, hot air balloon, plane or object not touching the ground. Advised subject may be looking down or the capture.